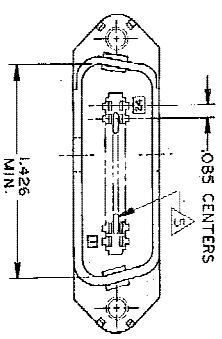
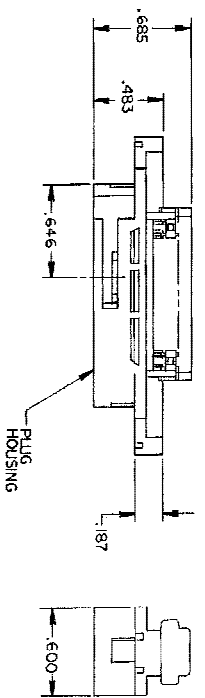
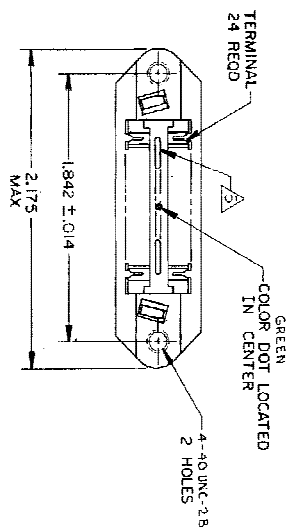


REV	DATE	REVISIONS	DATE	BY
00	12-15-79	INITIAL DESIGN	12-15-79	JZR/WML
01	12-28-79	REVISED FOR ESD-88-00823	3/4/07	ZJR/WML



1. THE CONTACT SURFACES OF THE TERMINALS ARE COATED WITH LUBRICANT.
2. ALL DIMENSIONS SHOWN ARE FOR REFERENCE ONLY UNLESS OTHERWISE SPECIFIED.
3. MATERIAL:
  - HOUSING - THERMOPLASTIC (BLACK)
  - TERMINALS - HIGH STRENGTH COPPER ALLOY PLATED WITH .000030 MIN GOLD, OR GOLD FLASH OVER .000030 MIN PALLADIUM NICKEL, ON CONTACT MATING SURFACE. .000050 MIN NICKEL UNDERPLATE OVER ENTIRE TERMINAL.
4. WIRE SIZE: 22 AWG SOLID OR 22 AWG 7 STRANDS OF COPPER CONDUCTORS. MAX INSULATION DIAMETER OF .045 IS ACCEPTABLE FOR MOST APPLICATIONS.

△ CORING MAY OR MAY NOT APPEAR AND IS AT THE DISCRETION OF TYCO ELECTRONICS.

DESCRIPTION	DATE	BY
AS SHOWN	12-15-79	JZR/WML
552301-1	12-28-79	JZR/WML

THIS DRAWING IS A CONTROLLED DOCUMENT	DATE	BY
	12-15-79	JZR/WML
	12-28-79	JZR/WML

APPROVED FOR RELEASE	DATE	BY
	12-15-79	JZR/WML
	12-28-79	JZR/WML

AM 1471-9 REV 3/10/00

552301